



COMPANY  
PROFILE

---

*Idea | Aqua | Blob*

# COMPANY PROFILE

Dove la cura del dettaglio raggiunge la perfezione. Ecco una linea di mobili bagno dal design ricercato per bagni moderni ed eleganti, adatti a progetti dalle linee essenziali e raffinate, alla quale abbiamo dedicato ricerca continua, estro e creatività. Il nostro obiettivo è proporre collezioni di grande equilibrio, interpretate da materiali, forme e trattamenti innovativi. Ogni progetto di arredo bagno, corredato da accessori e finiture adatte a ogni gusto, nasce con la finalità di assicurare comfort, funzionalità e bellezza a tutta la stanza. Mobili bagno moderni ed eleganti, in ogni singolo dettaglio.

*Perfection in details. This is a line of bathroom furniture with sophisticated design for modern, elegant bathrooms where smart, essential lines prevail. We have applied constant, creative research to designing perfectly balanced collections featuring innovative materials, shapes and finishes. Every bathroom décor project, complete with accessories and finishes to meet all tastes, is designed to ensure comfort, functionality and beauty. Every single detail enhances the elegant, modern style of our bathroom furniture.*

## **IDEAGROUP** *company*

---

Il gruppo / *Group* p. 02  
Le aziende / *Companies* p. 04  
Valori e sostenibilità /  
*Values and sustainability* p. 06

## **COLLEZIONI** *collections*

---

Idea p. 08  
Aqua p. 60  
Blob p. 102



Ideagroup

# identità d'azienda

*corporate identity*

Ideagroup oggi significa qualità industriale, dinamicità, ricerca, tecnologia, flessibilità e massima integrazione produttiva, mentre la costante ricerca è il nostro simbolo per vincere le sfide di un mercato sempre più ampio ed esigente.

*Ideagroup today means industry-level quality, dynamism, research, technology, flexibility and maximum integration of manufacturing technologies. On-going research is our key to tackling the challenges of an increasingly larger and more demanding market.*



## Idea

Idea è, tra le quattro, l'azienda più longeva. Il suo principale interesse nel settore arredo bagno è quello di creare una linea di prodotti capaci di offrire un ampio ventaglio di composizioni, dal gusto moderno e disinvolto, a quello raffinato ed elegante fino a raggiungere un pubblico più tradizionale.

*Of the four companies in the group, Idea has been on the scene the longest. Its broad product lines include modern solutions for younger tastes as well as elegant, more sophisticated products for customers who prefer a more traditional style.*

## Aqua

Aqua si distingue con collezioni di prodotti in cui è particolarmente marcata la tendenza nel realizzare pezzi d'arredo dalle forme essenziali, dove linearità e pulizia dei volumi vengono espresse dalla competenza professionale del progettista.

*Aqua's distinguishing feature is a line of products characterized by an essential style, where clean lines and uncluttered volumes are enhanced by the designer's professional skills.*

## Blob

Blob è l'azienda che propone pezzi d'arredo che si fanno notare per la sensibilità nel risolvere con gusto, armonia e soprattutto professionalità, lo spazio lavanderia ed i bagni di piccole dimensioni.

*Blob is the group company that manufactures furnishing items which stand out because of their ability to meet space requirements tastefully and harmoniously in laundry rooms and small bathrooms.*

## Disenia

Disenia, quarto satellite del gruppo Ideagroup, completa l'ampiezza di offerta con cui il gruppo si pone sul mercato. Realizza box doccia, piatti, vasche e accessori analizzando, studiando e progettando sia l'aspetto estetico che quello tecnologico.

*Ideagroup's fourth company, Disenia complements the group's product range with a line of shower enclosures designed to look good and also be technologically advanced.*

# sistema di produzione idea

*idea production system*

Ogni “prodotto” Ideagroup viene realizzato in Italia ma ciò che lo rende un esempio di Made in Italy per eccellenza (al 100%) sono i suoi valori: la creatività, la tradizione nel mondo del mobile che risale al 1987 e la qualità, caratteristica naturale per un’azienda che si confronta giornalmente con il proprio pubblico e le sue esigenze. Tutto ciò si traduce in un’esperienza e in un know-how specifici.

*Every Ideagroup product is made in Italy. On top of that, it is our companies’ values that really make our products wonderful examples of the concept of “made in Italy”: creativity, our tradition as furniture makers since 1987 and above all quality, which is the natural characteristic of a company that caters for its customers’ requirements on a daily basis. All of this is translated into specific experience and know-how.*

L’azienda è particolarmente sensibile nei confronti delle politiche ambientali, ecosostenibilità e sviluppo, per questo tutte le materie prime e gli elementi tecnici utilizzati provengono da produttori selezionati e di certificata affidabilità, nel rispetto delle normative europee vigenti in fatto di sicurezza e di rispetto per l’ambiente. Tutto il ciclo produttivo Ideagroup, che comprende i mobili bagno e i box doccia, è tecnologicamente all’avanguardia ed in costante aggiornamento.

*Our companies pay particular attention to the environment and the environmental sustainability of the entire product development process. All raw materials and technical components are supplied by selected reliable suppliers in compliance with current European norms on safety and the environment. The entire manufacturing process for our range of bathroom furniture and shower enclosures, although technologically advanced, is nonetheless constantly updated.*

# Soluzioni sostenibili per l’ambiente e l’azienda

*sustainable solutions  
based on environment  
and production*

ITALIAN  
DESIGN



CATAS



FSC  
FORESTS  
FOR ALL  
FOREVER



---

# collezioni Idea

*Idea collections*

---

<b>Cubik</b>	p. 10
<b>Form</b>	p. 20
<b>My Time</b>	p. 30
<b>My Seventy plus</b>	p. 40
<b>Spazio Time</b>	p. 50



# espressione di modernità e contemporaneità

*expression of modernity and  
contemporaneity*

# CUBIK

Design defined by Materials



C13 - L 160 x P 50 cm / Rovere antico - W 160 x D 50 cm / Rovere antico

Arredare l'ambiente bagno attraverso soluzioni che denotano un nuovo approccio stilistico e compositivo restituendo il concetto di estetica contemporanea.

*Furnishing the bathroom space with solutions that reflect a new approach to style and composition, providing a new concept of contemporary aesthetics.*

*Ein neues Konzept in Stil und Zusammenstellung bei der Einrichtung eines Badezimmers, das eine zeitgemäße Ästhetik erhält.*

*Aménager l'espace bain à travers des solutions qui traduisent une nouvelle approche du style et de la composition pour aboutir à un concept d'esthétique contemporaine.*



C11 - L 170 x P 50 cm / laminato unicolor HPL Impero - W 170 x D 50 cm / Impero Unicolor HPL



percorsi tra design,  
 esperienza,  
 qualità e vissuto *pathways of design,  
 know-how, quality and life  
 experience*



la zona bagno come  
personale rifugio dove  
vivere il proprio relax

*the bathroom as an intimate  
haven for personal relaxation*



C25 - L 150 x P 50 cm / Rovere Cadore - W 150 x D 50 cm / Rovere Cadore



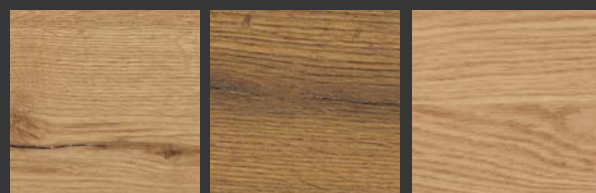
C4 - L 140 x P 50 cm / Laccato bianco opaco, frontali alluminio nero e vetro acidato bianco  
W 140 x D 50 cm / Matt bianco lacquer, bianco etched glass fronts with black aluminium frame



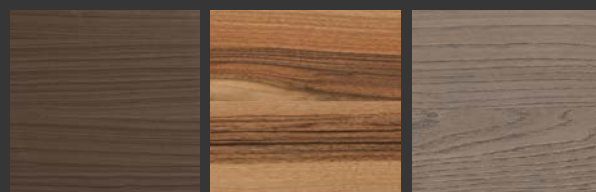
finiture / finishes

## essenze

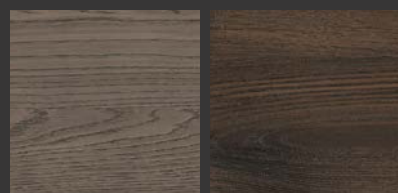
Wood-effect finishes / Oberflächen mit Holzeffekt  
Finitions effet bois / Acabados efecto madera



Rovere Cadore    Rovere Antico    Rovere Nodi



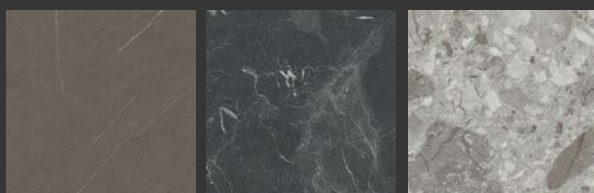
Noce Canaletto    Noce Italiano    Castagno  
Light Grey



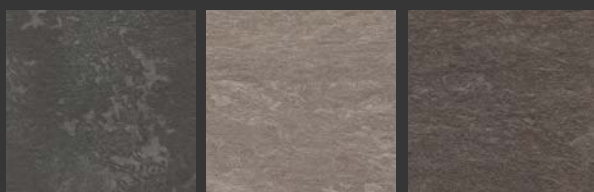
Castagno  
Dark Grey    Castagno Smoke

## laminati unicolor hpl

Unicolor HPL / Laminat Unicolor HPL  
Stratifiés Unicolor HPL / Laminados unicolor HPL



Tobacco    Impero    Mailand



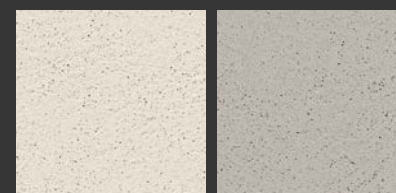
Ardesia    Evora Ecrù    Evora Vulcano



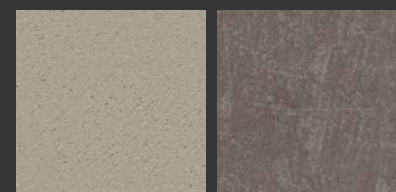
Cemento    Porfido

## ecomalta

Ecomalta / Ecomalta  
Ecomalta / Ecomalta



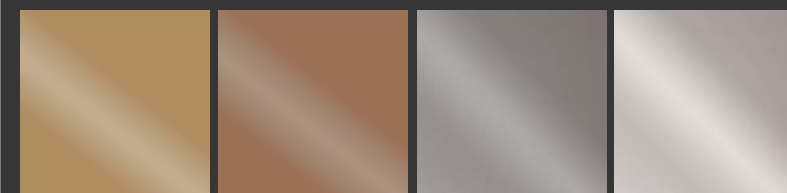
Crema    Ghiaia



Ecrù    Fango

## laccati metal color opachi

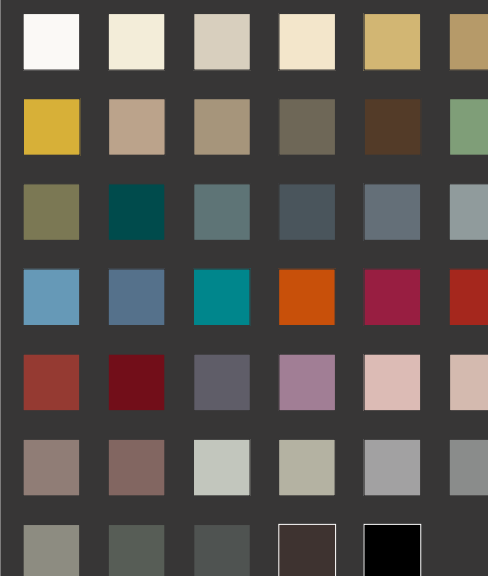
Metal color matt lacquers / Matte Lackausführungen metal  
Laqués Metal Color mats / Lacados mate de color metálico



Oro    Rame    Titanio    Bianco Perlato

## laccati opachi e lucidi

Matt and glossy lacquers  
Glänzende Lackausführungen  
Laqués mats et brillants  
Lacados mate y brillantes





# il design definisce nuove atmosfere

*design defines new atmospheres*

**FORM**  
a bathroom full of design



**F3** - L 140 x P 50 cm / Polimerico Bianco, Nobilitato Noce - W 140 x D 50 cm / Bianco polymer finish, Noce polymer finish

Form, diventa espressione purissima di estetica, funzione e modernità declinate all'abitare contemporaneo. Una collezione versatile, perfetta per rendere unica la stanza da bagno.

*Form, becomes the purest expression of aesthetics, functionality and modernity applied to contemporary living. It is a versatile collection designed to lend a unique touch to the bathroom.*

*Form, wird zum reinsten Ausdruck von Ästhetik, Funktionalität und Modernität, die das zeitgenössische Wohnen charakterisieren. Eine vielseitige Kollektion, die dem Badezimmer einen einzigartigen Touch verleiht.*

*Form, devient la plus pure expression de l'esthétique, de la fonctionnalité et de la modernité appliquées à l'ameublement contemporain. Une collection polyvalente, parfaite pour rendre votre salle de bains unique.*





F6 - L 140 x P 89.3 cm / Polimerico Bianco - W 140 x D 89.3 cm / White polymer finish

## ricercatezza di finiture ed abbinamenti

*sophisticated finishes and  
combinations*



F10 - L 215 x P 50 cm / Laccato Grigio Cenere soft touch  
W 215 x D 50 cm / Grigio Cenere soft touch lacquered

funzione,  
geometria e  
purezza *function, geometry  
and pure lines*



**F4** - L 160 x P 50/36/20 cm / Laccato Sahara opaco  
W 160 x D 50/36/20 cm / Sahara matt lacquered

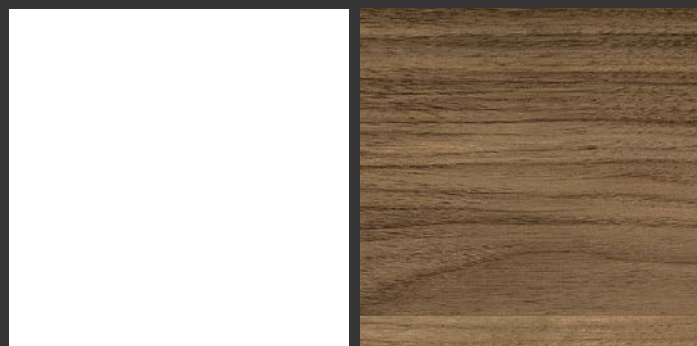




finiture / finishes

## finiture polimeriche

*Polymer finishes*  
*Polymer-Ausführungen*  
*Finitions polymères*  
*Acabados poliméricos*



Bianco

Noce

## laccati metal color opachi

*Metal color matt lacquers*  
*Matte Lackausführungen metal*  
*Laqués Metal Color mats*  
*Lacados mate de color metálico*



Oro

Rame



Titanio

Bianco Perlato

## laccati opachi e lucidi

*Matt and glossy lacquers*  
*Glänzende Lackausführungen*  
*Laqués mats et brillants*  
*Lacados mate y brillantes*







spazio che comunica  
attraverso un linguaggio  
fortemente contemporaneo

*a space that communicates through  
a distinctly modern language*

# MY TIME

A DOOR ON DESIGN



Mt3 - L 245 x P 50 cm / Rovere Borneo / Laccato Sahara opaco - W 245 x D 50 cm / Rovere Borneo / Sahara matt lacquered

Ritrovare la perfetta armonia con se stessi, in un ambiente capace di liberare nuova energia, in uno spazio che comunica attraverso un linguaggio fortemente contemporaneo. Nuove prospettive ridisegnano lo spazio più intimo della casa. Il bagno vive di contaminazioni living liberando uno spirito articolato ed audace.

*Find harmony in an environment that releases new energy, in a space that communicates through a distinctly modern language. New prospects define the most intimate room in the house. The bathroom draws its inspiration from the living area, and expresses its bold character.*

*Die perfekte Harmonie mit sich selbst erreichen, in einem ambiente, das eine neue Energie ausstrahlt, in einem Raum, der von einem absolut zeitgenössischen Stil geprägt ist. Das intimste Ambiente des Hauses innovativ in Szene gesetzt. Das Badezimmer lässt sich vom Wohnbereich inspirieren und enthüllt seinen mutigen Charakter.*

*Et trouver la parfaite harmonie avec soi-même, dans un environnement capable de libérer une énergie nouvelle, dans un espace qui communique à travers un langage fortement contemporain. De nouvelles perspectives redessinent l'espace le plus intime de la maison. La salle de bains tire son inspiration de la zone living, en exprimant son esprit complexe et audacieux.*





**Mt19** - L 105 + 35 + 35 × P 45,5 cm / Kiruna - W 105 + 35 + 35 × D 45,5 cm / Kiruna

forme, materiali e  
colori sono legati da un  
rapporto prezioso

*shapes, materials and colours  
are united in an important  
relationship*



**Mt2** - L 175 × P 50 cm + L 70 × P 20 cm / Laccato Confetto opaco / Laccato Medioevo opaco  
W 175 × D 50 cm + L 70 × D 20 cm / Confetto matt lacquered / Medioevo matt lacquered

il mood compositivo  
ricalca concetti  
legati alla bellezza  
essenziale

*new furnishing moods are  
inspired by the concept  
of essential beauty*



**Mt14** - L 250 x P 50 cm / Laccato Bianco opaco / Laccato Noce Moscata opaco  
W 250 x D 50 cm / Bianco matt lacquered / Noce moscata matt lacquered



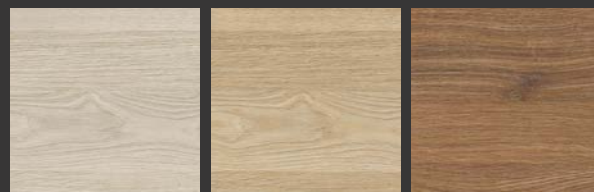
**Mt13** - L 135 x P 36 cm / Olmo Nocciola  
W 135 x D 36 cm / Olmo Nocciola wood-effect finish



## finiture / finishes

### essenze

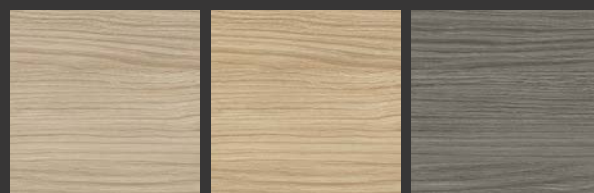
Wood-effect finishes / Oberflächen mit Holzeffekt  
Finitions effet bois / Acabados efecto madera



Rovere Tennis

Rovere Polo

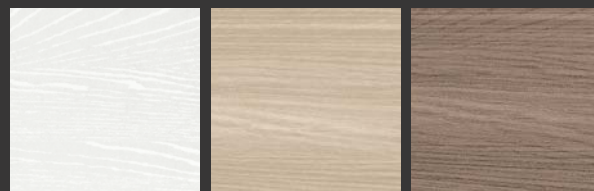
Rovere Fight



Rovere Borneo

Rovere Congo

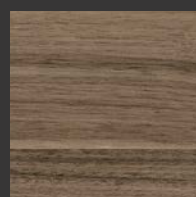
Rovere Papua



Olmo Bianco

Olmo Panna

Olmo Nocciola



Noce

### effetto cemento

Concrete effect / Betoneffekt  
Effet ciment / Efecto cemento



Kiruna

Kena

### laccati metal color opachi

Metal color matt lacquers  
Matte Lackausführungen metal  
Laqués Metal Color mats  
Lacados mate de color metálico



Oro

Rame

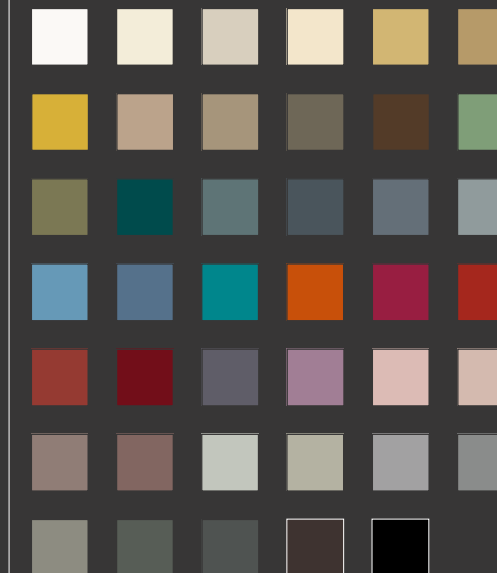


Titanio

Bianco Perlato

### laccati opachi e lucidi

Matt and glossy lacquers  
Glänzende Lackausführungen  
Laqués mats et brillants  
Lacados mate y brillantes





spazi ampi e luminosi  
ma anche intimi ed  
accoglienti

*wide spaces filled with plenty of light can  
also be cosy and welcoming*

## MYSEVENTYPLUS



**Ms8** - L 135 x P 36 + L 35 x P 36 / Laccato nero opaco, laccato Griglio Pietra opaco  
W 135 x D 36 + L 35 x D 36 / Nero matt lacquered, Griglio Pietra matt lacquered

Un'eleganza discreta, un talento naturale per la semplicità ma con una distinta personalità. Un progetto che assolve a nuove necessità del quotidiano, senza stravolgere le forme a cui siamo abituati.

*Discreet elegance and a natural inclination to simplicity are accompanied by unambiguous character. This furnishing line meets new daily requirements without distorting the shapes we are accustomed to.*

*Eine diskrete Eleganz, eine natürliche Neigung zur Schlichtheit, aber mit entschiedener Persönlichkeit. Ein Projekt, das den neuen täglichen Bedürfnissen gerecht wird, ohne die gewohnten Formen zu verzerren.*

*Une élégance discrète, un talent naturel pour la simplicité mais avec une personnalité marquée. Un projet qui répond aux nouvelles exigences du quotidien, sans bouleverser les formes auxquelles nous sommes habitués.*



Ms7 - L 180 x P 50 / Frassino laccato bianco decapè, frassino laccato grigio seta decapè  
W 180 x D 50 / Bianco matt lacquered ash wood, open-pore pickled finish; Grigio Seta lacquered ash wood, open-pore pickled finish



Ms - L 190 x P 50/36 cm / Frassino laccato bianco - W 190 x D 50/36 cm / White Frassino laquered

a basic  
style



Ms2 - L 130 x P 50/36 cm / Frassino tinto wengè  
W 130 x D 50/36 cm / Wenge stained ash wood



aspetti  
innovativi e  
valori estetici

*innovative aspects,  
aesthetical values*



**Ms10** - L 130 x P 50/36 / Laccato azzurro india opaco  
W 130 x D 50/36 / Azzurro India matt lacquered



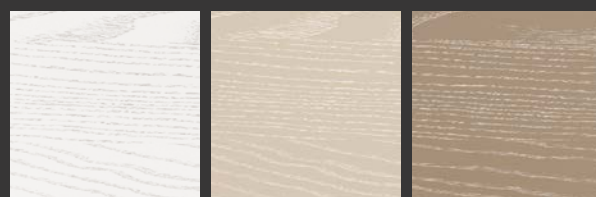
**Ms3** - L 45 x P 36 cm / Frassino tinto wengè - W 45 x D 36 cm / Wenge stained ash wood



finiture / finishes

## frassino laccato opaco decapè a poro aperto

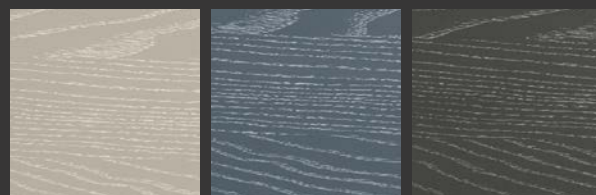
*Matt lacquered ash wood, open-pore pickled finish / Esche offenporig gebeizt und matt lackiert*  
*Frêne laqué mat décapé à pore ouvert / Fresno lacado mate, decapado de poro abierto*



Bianco

Sahara

Cappuccino



Grigio Seta

Azzurro India

Grigio Traffico

## frassino tinto wengè

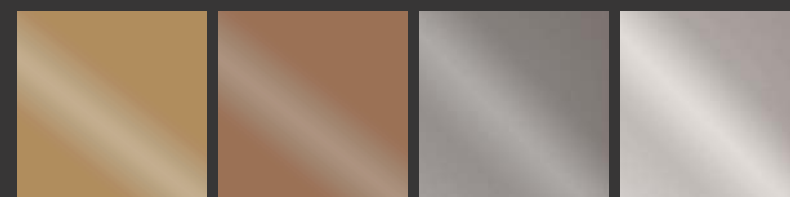
*Wenge stained ash wood / Esche wengefarben*  
*Frêne teinté wengé / Fresno teñido wengué*



Frassino tinto Wengè

## laccati metal color opachi

*Metal color matt lacquers / Matte Lackausführungen metal*  
*Laqués Metal Color mats / Lacados mate de color metálico*



Oro

Rame

Titanio

Bianco Perlato

## laccati opachi su finitura liscia e laccati opachi su finitura rovere a poro aperto

*Matt lacquers (plain finish) and matt lacquers (open-pore oak finish) / Matte Lackausführungen auf glatter Oberfläche und matte Lackausführungen auf offenporiger Eichenholzoberfläche*  
*Laqués mats (finition lisse) et laqués mats (finition chêne à pore ouvert) / Lacados mate en acabados lisos; lacados mate en acabado roble de poro abierto*





## nuove geometrie e verticalità elevano il concetto di comfort

*new geometric shapes and vertical lines  
enhance the concept of comfort*



**St2** - L 230 + 185 x P 65/20 cm / Rovere Borneo, Laccato Grigio Pietra opaco  
W 230 + 185 x D 65/20 cm / Rovere Borneo, Grigio pietra matt lacquered

Una perfetta evoluzione dove, ancora una volta, si riscopre un'ottimizzazione di percorsi e funzioni, dove si celebra un'estetica pulita ed essenziale, perfetta per accogliere le azioni del quotidiano. Nuove geometrie e verticalità elevano il concetto di comfort.

*The perfect evolution of our furniture collections reveals improved guidelines and functions, and shows clean, uncluttered aesthetic features designed to accommodate daily functions. New geometric shapes and vertical lines enhance the concept of comfort.*

*Wieder einmal enthüllt die perfekte Evolution unserer Einrichtungskollektionen optimierte Lösungen und Funktionen und eine schlichte, saubere Optik, um die täglichen Funktionen perfekt abwickeln zu können. Die neuen geometrischen Formen und die vertikalen Linien erweitern das Konzept von Komfort.*

*Encore une fois, l'évolution parfaite de nos collections de meubles révèle des parcours et des fonctions optimisées, caractérisés par une esthétique propre et essentielle, conçue pour faciliter votre quotidien. De nouvelles formes géométriques et des lignes verticales renforcent le concept de confort.*



St1 - L 250 x P 65/20 cm + L 295 x P 50 cm / Rovere Papua, Kiruna  
W 250 x D 65/20 cm + L 295 x D 50 cm / Rovere Papua, Kiruna



progettualità  
 razionale *rational*  
 design *design*



S19 - L 205 x P 65/20 + L 189 x P 50 cm / Kiruna  
 W 205 x D 65/20 + L 189 x D 50 cm / Kiruna

tendenza  
nello spazio  
lavanderia

*furnishing trends  
in the laundry room*



**St5** - L 260 x P 65/20 + L 189 x P 50 cm / Rovere Borneo, Kena  
W 260 x D 65/20 + L 189 x D 50 cm / Rovere Borneo, Kena

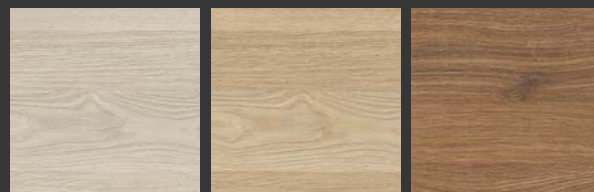


**St11** - L 140 x P 36 + L 140 x P 65 cm / Kiruna - W 140 x D 36 + L 140 x D 65 cm / Kiruna

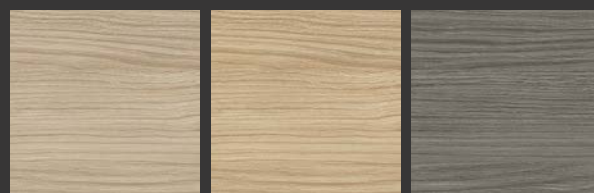
finiture / finishes

essenze

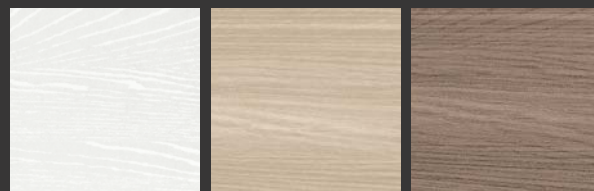
*Wood-effect finishes*  
*Oberflächen mit Holzeffekt*  
*Finitions effet bois*  
*Acabados efecto madera*



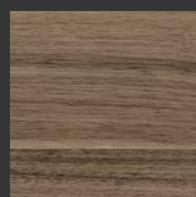
Rovere Tennis    Rovere Polo    Rovere Fight



Rovere Borneo    Rovere Congo    Rovere Papua



Olmo Bianco    Olmo Panna    Olmo Nocciola



Noce

effetto cemento

*Concrete effect*  
*Betoneffekt*  
*Effet ciment*  
*Efecto cemento*



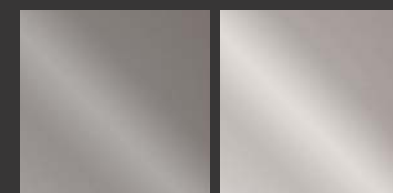
Kiruna    Kena

laccati metal color opachi

*Metal color matt lacquers*  
*Matte Lackausführungen metal*  
*Laqués Metal Color mats*  
*Lacados mate de color metálico*



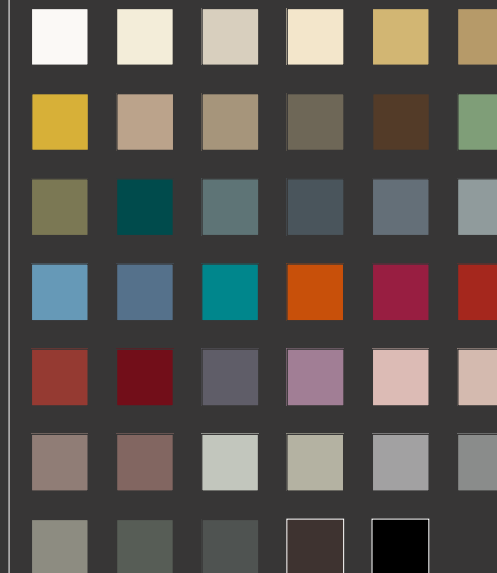
Oro    Rame



Titanio    Bianco Perlato

laccati opachi e lucidi

*Matt and glossy lacquers*  
*Glänzende Lackausführungen*  
*Laqués mats et brillants*  
*Lacados mate y brillantes*





---

# collezioni Aqua

*Aqua collections*

---

<b>Sense</b>	p. 62
<b>Nyù</b>	p. 72
<b>Dolcevita</b>	p. 82
<b>Dogma</b>	p. 92





connubio tra  
tecnologia  
ed eleganza

*harmony between  
technology and elegance*

# Sense

/ emotional touch of the surface /



**S8** - L 242.4 x P 50 cm / Teak Laccato Nero, Laccato Nero opaco  
W 242.4 x D 50 cm / Nero lacquered Teak, Nero matt lacquered

La collezione Sense riporta in primo piano il concetto di materia: un nuovo percorso estetico capace di coniugare materiali dalla forte connotazione tecnologica con essenze robuste dal carattere ruvido.

*The Sense collection revolves around the concept of materials: its aesthetic inspiration blends technically advanced materials with hard-wearing textured wood finishes.*

*Die Sense-Kollektion stellt das Materialkonzept in den Vordergrund: eine gelungene Mischung aus hochtechnologischen Materialien und strapazierfähigen, strukturierten Holzoberflächen.*

*La collection Sense reporte au premier plan le concept de la matière: un nouveau parcours esthétique en mesure d'allier des matériaux technologiquement avancés à des finitions bois robustes à texture rugueuse.*



S1 - L 241.2 x P 50 cm / Fenix Verde Comodoro  
W 241.2 x D 50 cm / Verde Comodoro Fenix



S6 - L 168.6 x P 50 cm / Teak sabbiato marmotta - W 168.6 x D 50 cm / Teak sabbiato marmotta

un percorso  
stilistico  
tra design e  
tradizione *a style that blends  
design and tradition*



S11 - L 182.4 x P 50 cm / Teak Sabbiato Naturale, Fenix Rosso Jaipur  
W 182.4 x D 50 cm / Teak Sabbiato Naturale, Rosso Jaipur Fenix

nuova  
dimensione  
legata al concetto  
di comfort *new dimension linked to  
the concept of comfort*



**S10** - L 182.4 x P 50 cm / Laccato Biscotto opaco, Teak Sabbiato Bianco  
W 182.4 x D 50 cm / Biscotto matt lacquered, Teak Sabbiato Bianco



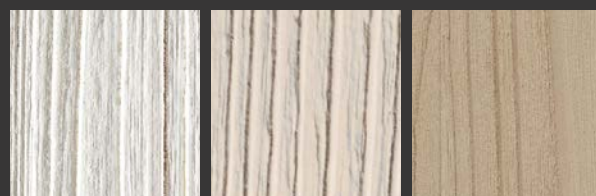
**S6** - L 137.4 x P 50 cm / Fenix Nero Ingo - W 137.4 x D 50 cm / Ingo Fenix Nero



## finiture / finishes

### essenze

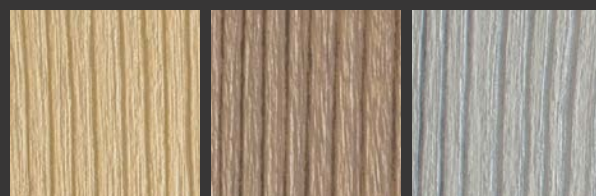
Wood-effect finishes / Oberflächen mit Holzeffekt  
Finitions effet bois / Acabados efecto madera



Teak Sabbiato  
Bianco

Teak Sabbiato  
Avorio

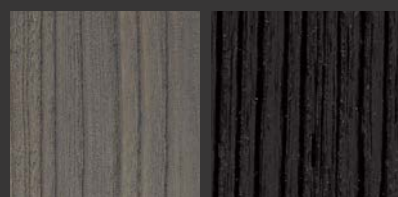
Teak Sabbiato  
Marmotta



Teak Sabbiato  
Naturale

Teak Sabbiato  
Canapa

Teak Sabbiato  
Cenere

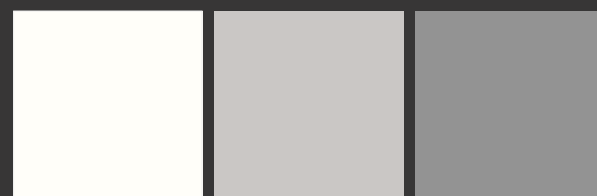


Teak Sabbiato  
Piombo

Teak Sabbiato  
Nero

### fenix ntm

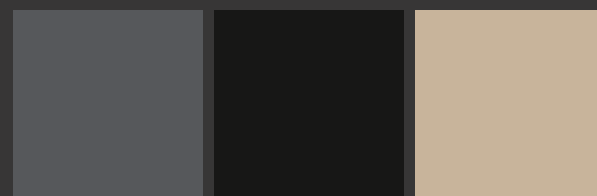
Fenix NTM / Fenix NTM  
Fenix NTM / Fenix NTM



Bianco Kos

Grigio Efeso

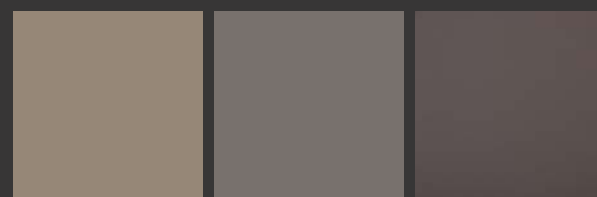
Grigio Antrim



Grigio Bromo

Nero Ingo

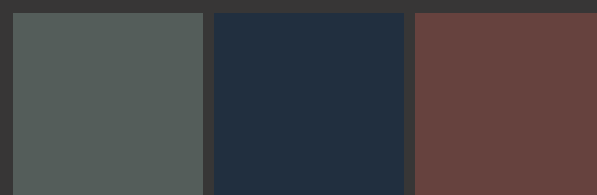
Beige Luxor



Castoro Ottawa

Grigio Londra

Cacao Orinoco



Verde Comodoro

Blu Fes

Rosso Jaipur

### laccati metal color opachi su finitura liscia e laccati metal color opachi su finitura teak a poro aperto

Metal color matt lacquers (plain finish); metal color matt lacquers (open-pore teak finish) / Glatte matte Lackausführungen metal und matte Lackausführungen metal auf offenporiger Teak-Oberfläche / Laqués Metal Color mats (finition lisse) et laqués Metal Color mats (finition teak à pore ouvert) / Lacados mate de color metálico en acabado liso y lacados mate de color metálico en acabado de teca de poro abierto



Oro

Rame

Titanio

Bianco  
Perlato

Oro

Rame

Titanio

Bianco  
Perlato

### laccati opachi e lucidi su finitura liscia e laccati opachi su finitura teak a poro aperto

Matt and glossy lacquers (plain finish); matt lacquers (open-pore teak finish) / Glänzende Lackausführungen auf glatter Oberfläche und matte Lackausführungen auf offenporiger Teak-Oberfläche / Laqués mats, brillants (finition lisse) et laqués mats (finition teak à pore ouvert) / Lacados mate, brillantes, en acabado liso y lacados mate en acabado de teca de poro abierto





# il linguaggio della creatività

*the language of creativity*

# Nyù

/ approaching the detail /



N9 - L 182.4 x P 50 cm / Laccato bianco opaco - W 182.4 x D 50 cm / Bianco matt lacquered

Dall'esperienza di progetto e dalla tradizione produttiva nasce, in Aqua, una collezione di mobili per disegnare nuovi spazi personali.

*Aqua's design experience and manufacturing tradition result in a furnishing collection that creates new personal spaces in the bathroom.*

*Der projektspezifischen Erfahrung und der Produktionstradition von Aqua entspringt eine Möbelkollektion, die neue persönliche Bereiche im Badezimmer entstehen lässt.*

*L'expérience de design et la tradition de production d'Aqua se concrétisent dans une collection de meubles qui créent de nouveaux espaces personnels dans la salle de bains.*



perfette  
coincidenze  
di linee e  
spessori *perfectly coinciding  
lines and thicknesses*



**N18** - L 192 x P 50 cm / Laccato bianco opaco, laminato unicolor hpl california  
W 192 x D 50 cm / Bianco matt lacquered, California Unicolor HPL



**N16** - L 183.6 x P 50 cm / Laminato unicolor hpl rugby  
W 183.6 x D 50 cm / Rugby Unicolor HPL



totale affidabilità  
grazie a materiali  
superiori *absolute reliability is  
guaranteed by top-quality  
materials*



**N1** - L 162,4 x P 50 cm / Laminato unicolor hpl sky, fenix cacao orinoco  
W 162,4 x D 50 cm / Sky Unicolor HPL, Cacao Orinoco Fenix

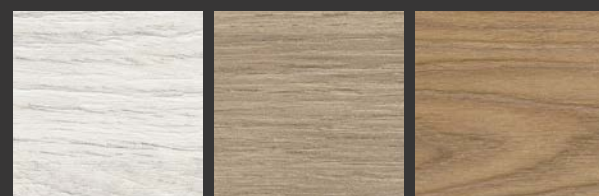


finiture / finishes

## laminati unicolor hpl

*Unicolor HPL / Laminat Unicolor HPL*

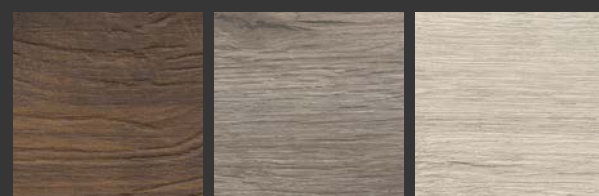
*Stratifiés Unicolor HPL / Laminados unicolor HPL*



Rugby

Yacht

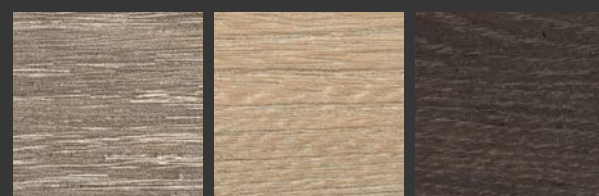
Cricket



Sky

Texas

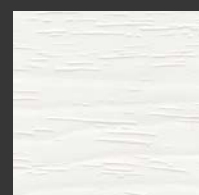
California



Rovere Avana

Olmo

Rovere Bruciato

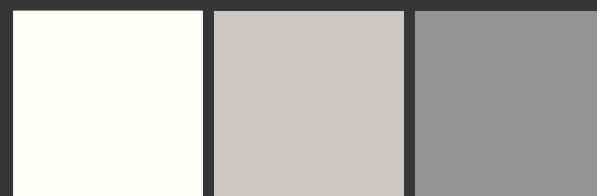


Rovere Bianco Carta

## fenix ntm

*Fenix NTM / Fenix NTM*

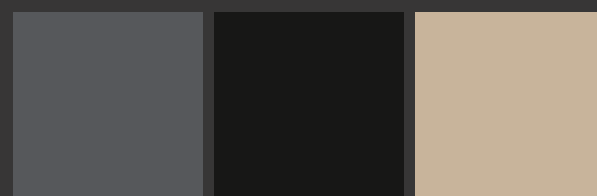
*Fenix NTM / Fenix NTM*



Bianco Kos

Grigio Efeso

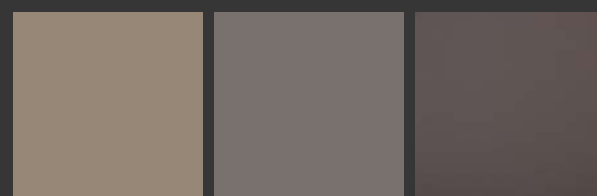
Grigio Antrim



Grigio Bromo

Nero Ingo

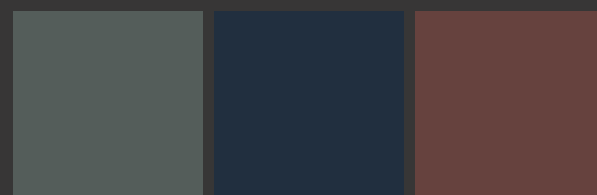
Beige Luxor



Castoro Ottawa

Grigio Londra

Cacao Orinoco



Verde Comodoro

Blu Fes

Rosso Jaipur

## laccati metal color opachi

*Metal color matt lacquers / Matte Lackausführungen metal*

*Laqués Metal Color mats / Lacados mate de color metálico*



Oro

Rame

Titanio

Bianco Perlato

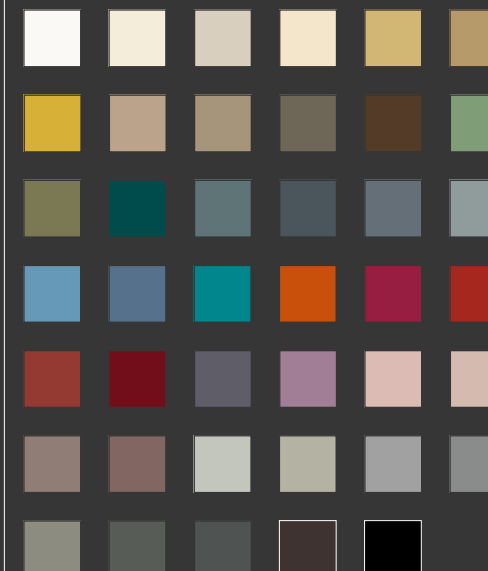
## laccati opachi e lucidi

*Matt and glossy lacquers*

*Glänzende Lackausführungen*

*Laqués mats et brillants*

*Lacados mate y brillantes*





rivisitazione  
contemporanea  
dell'eleganza e  
delle lavorazioni  
artigianali

*a modern approach to the concepts of  
elegance and skilled craftsmanship*

# DOLCEVITA

DESIGN MEETS MOVEMENT



**DV9** - L 240 x P 50 cm / Laccato metal color titanio opaco - W 240 x D 50 cm / Titanio Metal Color matt lacquered

Dolcevita come filosofia progettuale legata al piacere di vivere i propri spazi abitativi, attraverso un'impronta iconica unica e inconfondibile.

*Dolcevita is a design philosophy that revolves around the pleasure of living and lends a unique, unmistakable touch to modern bathrooms.*

*Dolcevita ist eine Designphilosophie, für die der Lebensgenuss im Mittelpunkt steht und die modernen Bädern einen einzigartigen, unverwechselbaren Touch verleiht.*

*Dolcevita est une philosophie conceptuelle centrée sur le plaisir de vivre et d'apporter une empreinte iconique exclusive et incomparable aux salles de bains modernes.*



DV1 - L. 140 x P. 50 cm / Rovere laccato bianco opaco poro aperto - W. 140 x D. 50 cm / Bianco matt lacquered open-pore oak finish



DV2 - L 248 x P 50 cm / Rovere naturale, vetro fumé con schiena in rovere naturale  
W 248 x D 50 cm / Rovere Naturale, tinted glass with Rovere Naturale back panel

composizione ed  
ambiente si incontrano  
attraverso un dialogo  
reciproco *ongoing dialogue between the  
cabinets and the surrounding  
environment*



DV6 - L 254 x P 50/18 cm / Rovere naturale, gres statuario opaco  
W 254 x D 50/18 cm / Rovere Naturale, matt Statuario stoneware

anche la stanza da  
bagno esprime una  
forte personalità

*modern bathrooms express  
a strong personality too*



**DV3** - L 168 x P 50 cm / Rovere moro, gres marquinia lucido  
W 168 x D 50 cm / Rovere Moro, glossy Marquinia stoneware

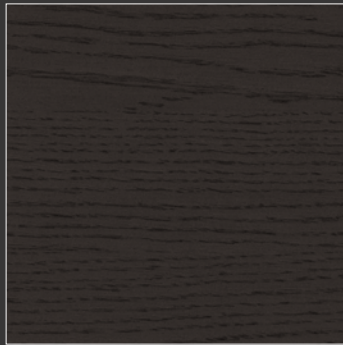


**DV8** - L 185 x P 50/16 cm / Rovere moro  
W 185 x D 50/16 cm / Rovere Moro

finiture / finishes

essenze

Wood-effect finishes  
Oberflächen mit Holzeffekt  
Finitions effet bois  
Acabados efecto madera



Rovere Moro



Rovere Naturale

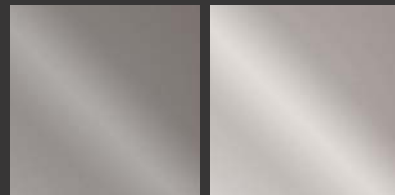
laccati metal color opachi

Metal color matt lacquers  
Matte Lackausführungen metal  
Laqués Metal Color mats  
Lacados mate de color metálico



Oro

Rame

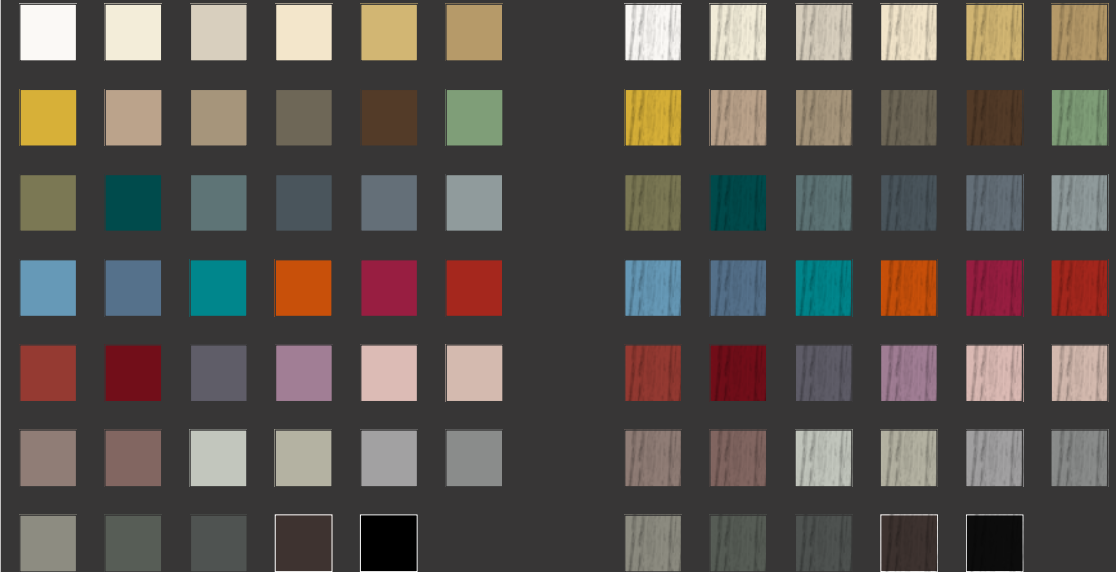


Titanio

Bianco Perlato

laccati opachi su finitura liscia e laccati opachi su finitura rovere a poro aperto

Matt lacquers (plain finish) and matt lacquers (open-pore oak finish) / Matte Lackausführungen auf glatter Oberfläche und matte Lackausführungen auf offenporiger Eichenholzoberfläche  
Laqués mats (finition lisse) et laqués mats (finition chêne à pore ouvert) / Lacados mate en acabados lisos; lacados mate en acabado roble de poro abierto





il design è  
protagonista;  
estetica pura e  
funzionale

*design is the true  
protagonist: pure,  
functional aesthetics*

# /Dogma/

NEW RULES FOR THE MODERN BATHROOM



**D1** - L 280 x P 50/18 cm / Rovere naturale, gres statuario opaco  
W 280 x D 50/18 cm / Rovere naturale, matt Statuario Stoneware

Dogma inteso come nuova filosofia progettuale, come nuovo pensiero capace di riscrivere il concetto di design e di emozione legati all'ambiente bagno.

*Dogma is a new style philosophy, a new approach that redefines the concept of design and comfort associated with the bathroom.*

*Dogma ist eine neue Stilphilosophie, ein neuer Ansatz, der die Konzepte des Designs und der Emotionen, die mit dem Badezimmerambiente verbunden sind, neu definiert.*

*Dogma est une nouvelle philosophie conceptuelle, une nouvelle approche qui redéfinit les concepts de design et d'émotion liés à l'univers de la salle de bains.*





D2 - L 160 x P 50 cm / Rovere termocotto - W 160 x D 50 cm / Rovere termocotto



D6 - L 160 x P 50/36 cm / Rovere termocotto, gres statuario opaco  
 W 160 x D 50/36 cm / Rovere termocotto, matt Statuario stoneware

linguaggi in  
 continuo *constantly*  
 divenire *evolving*  
*styles*



D10 - L 120 x P 50 + L 40 x P 28 cm / Laccato bianco opaco, carbone, abete vintage naturale  
 W 120 x D 50 + L 40 x D 28 cm / Bianco matt lacquered, Carbone, natural vintage fir

nuove prospettive  
nell'ambiente  
bagno *new perspectives  
for the bathroom*



**D11** - L 120 x P 50 + L 52 x P 28 cm / Rovere laccato bianco opaco poro aperto, cristallo fumè con schienale rovere laccato bianco opaco poro aperto - W 120 x D 50 + L 52 x D 28 cm / Bianco matt lacquered open-pore oak finish, tinted glass with Bianco matt lacquered open-pore oak finish back panel

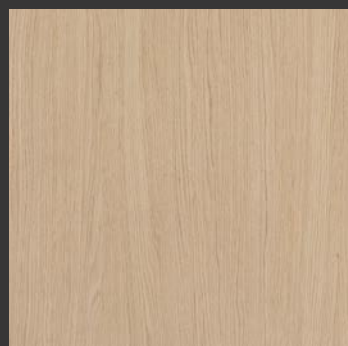




finiture / finishes

essenze

Wood-effect finishes / Oberflächen mit Holzeffekt  
Finitions effet bois / Acabados efecto madera



Rovere Naturale

gres

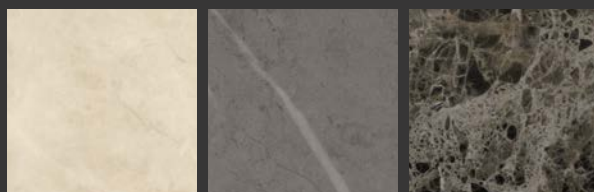
Stoneware / Steinzeug  
Grès / Gres



Calacatta venato oro  
(lucido o opaco /  
glossy or matt)

Statuario  
(lucido o opaco /  
glossy or matt)

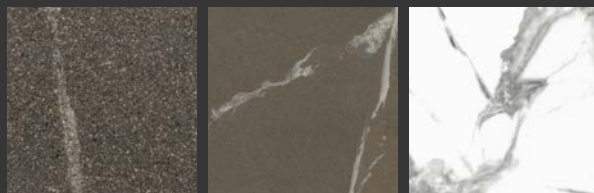
Nero Marquinia  
(lucido o opaco /  
glossy or matt)



Diamond Cream  
(lucido o opaco /  
glossy or matt)

Pietra Grey  
(lucido o opaco /  
glossy or matt)

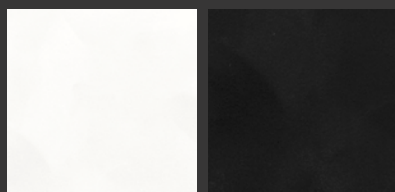
Emperador Extra  
(lucido o opaco /  
glossy or matt)



Pietra Piasentina Taupe  
(opaco o fiammato /  
matt or flamed)

Pietra Piasentina Grigio  
(opaco o fiammato /  
matt or flamed)

Invisible White (soft)

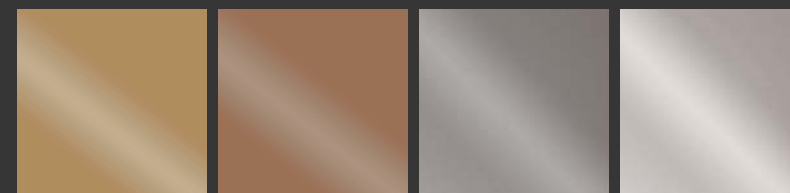


Bianco Assoluto

Nero Assoluto

laccati metal color opachi

Metal color matt lacquers / Matte Lackausführungen metal  
Laqués Metal Color mats / Lacados mate de color metálico



Oro

Rame

Titanio

Bianco Perlato

laccati opachi su finitura liscia e laccati opachi su finitura rovere a poro aperto

Matt lacquers (plain finish) and matt lacquers (open-pore oak finish) / Matte Lackausführungen auf glatter Oberfläche und matte Lackausführungen auf offenerporiger Eichenholzoberfläche  
Laqués mats (finition lisse) et laqués mats (finition chène à pore ouvert) / Lacados mate en acabados lisos; lacados mate en acabado roble de poro abierto





---

# collezioni Blob

*Blob collections*

---

<b>System</b>	p. 104
<b>Smyle</b>	p. 114
<b>Dressy</b>	p. 124
<b>Basic</b>	p. 134
<b>Moon</b>	p. 144
<b>Kandy</b>	p. 154



design essenziale,  
massima funzionalità,  
flessibilità e libertà  
compositiva

*essential design, ultimate  
functionality, flexibility and  
modular freedom*

# System

*Make up your bathroom*



**St1** - L 100 x P 46.5 + L 26.6 x P 25 cm / Nobilitato BA993 - W 100 x D 46.5 + L 26.6 x D 25 cm / BA993 melamine finish

*Design essenziale, massima funzionalità, flessibilità e libertà compositiva: scopriamo System, la nuova collezione firmata Blob pensata per arredare, con stile e personalità, il bagno contemporaneo.*

*Essential design, ultimate functionality, flexibility and modular freedom: this is System, the new furnishing collection by Blob designed to add style and character to modern bathrooms.*

*Schlichtes Design, maximale Funktionalität, Flexibilität und Gestaltungsfreiheit: all dies verkörpert System, die neue Kollektion von Blob, die entwickelt wurde, um dem modernen Badezimmer Stil und Persönlichkeit zu verleihen.*

*Design essentiel, fonctionnalité maximale, flexibilité et liberté de composition : voici System, la nouvelle collection de meubles de Blob conçue pour décorer, avec style et personnalité, la salle de bains contemporaine.*





St5 - L 81 x P 46,5 cm / Laccato bianco opaco - W 81 x D 46,5 cm / Bianco matt lacquered

abbinamento di  
capacità contenitiva  
ed armonia di tipo  
estetico *combination of plenty of storage  
space and harmonious design*



St7 - L 70 + 70 x P 46,5 cm / Nobilitato BA993  
W 70 + 70 x D 46,5 cm / BA993 melamine finish



evoluzione  
stilistica, funzionale  
e progettuale *evolution of styles,  
functions and design*



**St9** - L 60 x P 46.5 cm / Laccato noce moscata opaco - W 60 x D 46.5 cm / Noce Moscata matt lacquered



finiture / finishes

## finiture nobilitate

*Melamine finishes*  
*Melaminbeschichtungen*  
*Finitions mélaminées*  
*Acabados melaminados*



Bianco

BA991



BA992

BA993

## laccati metal color opachi

*Metal color matt lacquers*  
*Matte Lackausführungen metal*  
*Laqués Metal Color mats*  
*Lacados mate de color metálico*



Oro

Rame



Titanio

Bianco Perlato

## laccati opachi e lucidi

*Matt and glossy lacquers*  
*Glänzende Lackausführungen*  
*Laqués mats et brillants*  
*Lacados mate y brillantes*





# l'ambiente bagno vive di un nuovo design

*the bathroom space suggests  
a new design*

## Smyle Bathroom gets simple



Sy8 - L 60 + 60 x P 50 cm / Finitura CB003 opaco - W 60 + 60 x D 50 cm / CB003 matt finish

Estetica e funzionalità si coniugano dando voce a sistemi compositivi che raccontano il design contemporaneo. Soluzioni capaci di adattarsi ad ogni tipologia di spazio grazie alla loro versatilità e al loro carattere sobrio e deciso.

*Aesthetics and functionality are combined giving voice to compositional systems which speak the contemporary design language. Solutions able to adapt to every type of space thanks to their versatility and their sober and decided personality.*

*Ästhetik und Funktionalität vereint geben dem Kompositions-System Stimme und erzählen vom zeitgenössischen Design. Lösungen die in der Lage sind sich jedem Platzangebot anzupassen dank der Flexibilität und des schlichten und entschlossenem Charakters.*

*Esthétique et fonctionnalité se combinent pour créer des systèmes de compositions qui parlent du design moderne. Solutions qui s'adaptent à chaque typologie d'espace grâce à sa polyvalence et caractère sobre mais décidé.*



Sy4 - L 80 x P 50 + L 35 x P 30 cm / Finitura LB004 - W 80 x D 50 + L 35 x D 30 cm / LB004 finish



Sy1 - L 90 x P 50 cm / Laccato medioevo opaco  
W 90 x D 50 cm / Medioevo matt laquered

l'arredobagno  
visto attraverso  
la purezza delle  
linee *bathroom furnitures seen  
through the shapes purity*



Sy2 - L 120 x P 50+ L 35 x P 30 cm / Finitura LB004  
W 120 x D 50 + L 35 x D 30 cm / LB004 finish

evoluzione,  
design  
e funzionalità

*evolution, design  
and functionality*



**Sy6** - L 90 x P 47.5/30 + L 35 x P 30 cm / Finitura CB003 opaco  
W 90 x D 47.5/30 + L 35 x D 30 cm / CB003 matt finish





finiture / finishes

## essenze polimeriche

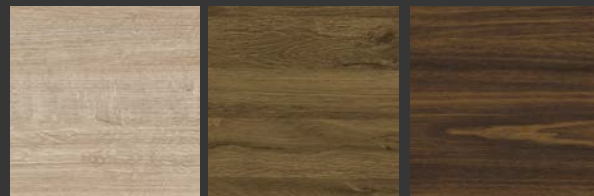
*Wood-effect polymer finishes*  
*Polymere Oberflächen mit Holzeffekt*  
*Finitions polymères effet bois*  
*Acabados poliméricos efecto madera*



LB001

LB002

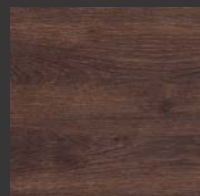
LB003



LB004

LB005

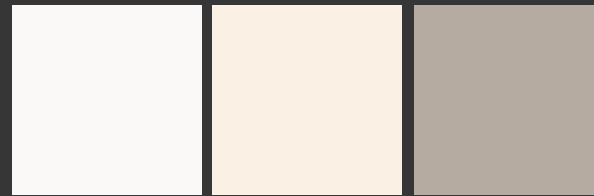
LB006



LB007

## colori polimerici

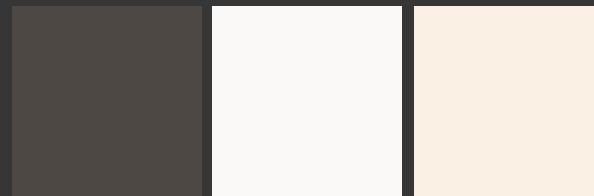
*Coloured polymer finishes (matt and glossy)*  
*Farbige Polymeroberflächen (matt und glänzend)*  
*Finitions polymères colorées brillantes et mates*  
*Colores poliméricos brillantes y mate*



CB001 opaco

CB002 opaco

CB003 opaco



CB004 opaco

CB005 lucido

CB006 lucido

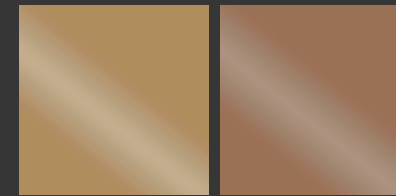


CB007 lucido

CB008 lucido

## laccati metal color opachi

*Metal color matt lacquers*  
*Matte Lackausführungen metal*  
*Laqués Metal Color mats*  
*Lacados mate de color metálico*



Oro

Rame



Titanio

Bianco Perlato

## laccati opachi e lucidi

*Matt and glossy lacquers*  
*Glänzende Lackausführungen*  
*Laqués mats et brillants*  
*Lacados mate y brillantes*





## simbolo di eleganza contemporanea

*contemporary elegance  
symbol*

**Dressy**  
*Contemporary  
elegance symbol*



**Dy1** - L 120+35+35 x P 50/30 cm / Finitura CB004 opaco - W 120 + 35 + 35 x D 50/30 cm / CB004 matt finish

Stile ed ispirazione definiscono la nuova collezione Dressy dove convergono suggestioni di natura elegante, contemporanea e vintage. Essenze e colori desaturati rievocano atmosfere indispensabili per caratterizzare l'ambiente bagno.

*Style and inspiration are the keywords of the new Dressy collection, where modern blends with vintage for a truly elegant visual effect. Wood finishes and pastel colours call to mind unique atmospheres that characterize the bathroom environment.*

*Die neue Kollektion Dressy zeichnet sich durch Stil und Inspiration aus: eine Mischung aus Eleganz, Moderne und Vintage. Holz und entsättigte Farben lassen eine angenehme Atmosphäre im Badezimmerambiente entstehen.*

*La nouvelle collection Dressy est caractérisée par le style et l'inspiration : un effet visuel très élégant créé grâce à la fusion du contemporain et du vintage. Les finitions bois et les teintes claires évoquent des ambiances uniques qui personnalisent votre salle de bains.*





Dy2 - L 105+35+35 x P 50/30 cm / Finitura LB003, finitura CB002 opaco - W 105 + 35 + 35 x D 50/30 cm / LB003 finish, CB002 matt finish



Dy9 - L 105 x P 50 cm / Finitura CB006 lucido - W 105 x D 50 cm / CB006 glossy finish

percorsi tra  
design e  
funzionalità

*furnishing solutions that  
blend design and functionality*



Dy6 - L 125 x P 50 cm / Finitura LB007 - W 125 x D 50 cm / LB007 finish

nuove  
esperienze  
abitative  
*new living  
experiences*



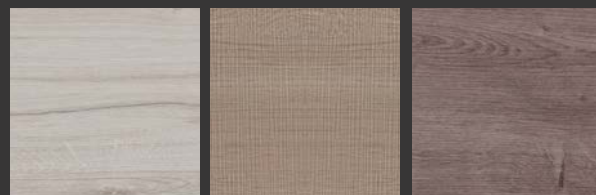
Dy8 - L 175 x P 50/60 cm / Finitura CB003 opaco - W 175 x D 50/60 cm / CB003 matt finish



finiture / finishes

## essenze polimeriche

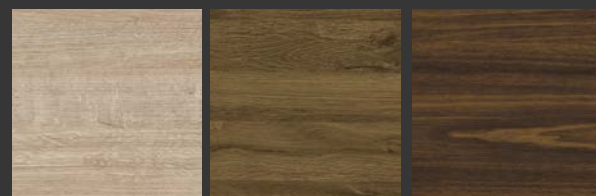
*Wood-effect polymer finishes*  
*Polymere Oberflächen mit Holzeffekt*  
*Finitions polymères effet bois*  
*Acabados poliméricos efecto madera*



LB001

LB002

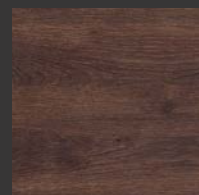
LB003



LB004

LB005

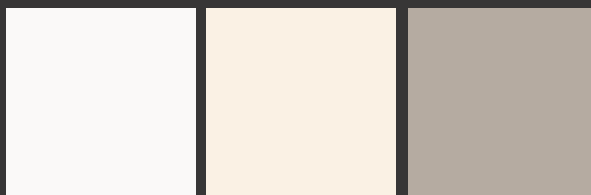
LB006



LB007

## colori polimerici lucidi e opachi

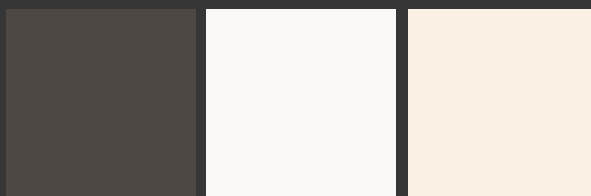
*Coloured polymer finishes (matt and glossy)*  
*Farbige Polymeroberflächen (matt und glänzend)*  
*Finitions polymères colorées brillantes et mates*  
*Colores poliméricos brillantes y mate*



CB001 opaco

CB002 opaco

CB003 opaco



CB004 opaco

CB005 lucido

CB006 lucido



CB007 lucido

CB008 lucido

## laccati metal color opachi

*Metal color matt lacquers*  
*Matte Lackausführungen metal*  
*Laqués Metal Color mats*  
*Lacados mate de color metálico*



Oro

Rame

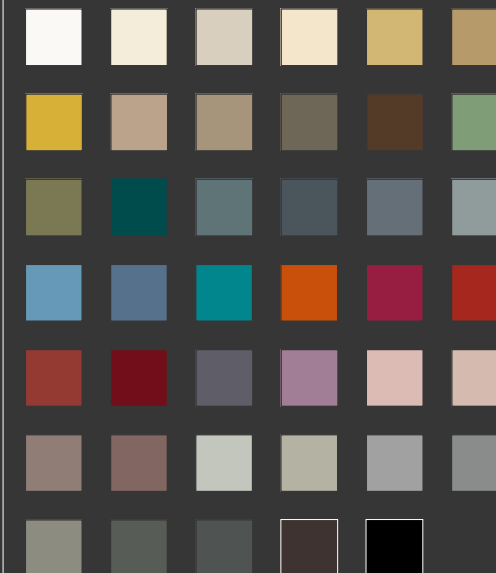


Titanio

Bianco Perlato

## laccati opachi e lucidi

*Matt and glossy lacquers*  
*Glänzende Lackausführungen*  
*Laqués mats et brillants*  
*Lacados mate y brillantes*





lineare,  
essenziale, dal  
carattere deciso

*streamlined,  
essential, bold*

**BASIC**  
#rational creativity



**B6** - L 100+35 x P 45/25 cm / Lacklaminat BA002 lucido - W 100 + 35 x D 45/25 cm / BA002 glossy Lacklaminat

Lineare, essenziale, dal carattere deciso. In una parola, Basic. Progettualità e creatività diventano particolarmente razionali, ponendosi come risposta perfetta per chi cerca una soluzione fresca e contemporanea per caratterizzare l'ambiente bagno.

*Streamlined, essential, bold: these are the keywords that describe the Basic collection. Design and creativity are combined rationally, delivering the perfect solution to those who prefer a fresh, contemporary bathroom.*

*Linear, schlicht, entschieden: mit diesen Stichworten kann man die Basic -Kollektion beschreiben. Design und Kreativität werden rational kombiniert und liefern eine perfekte Einrichtungslösung für diejenigen, die ein frisches, modernes Badezimmerambiente bevorzugen.*

*Linéaire, essentielle, déterminée: ce sont les mots-clés qui décrivent la collection Basic. Conception et créativité alliées à rationalité pour offrir la solution parfaite à tous ceux qui recherchent un espace salle de bains vivant et contemporain.*



B1 - L 100+35 x P 45/25 cm / Lacklaminat BA003 lucido - W 100 + 35 x D 45/25 cm / BA003 glossy Lacklaminat



B5 - W 80 x D 45 cm / BA991 melamine finish

**Basic è  
sostanza e  
forma**  
*Basic is all about combining  
shape and substance*



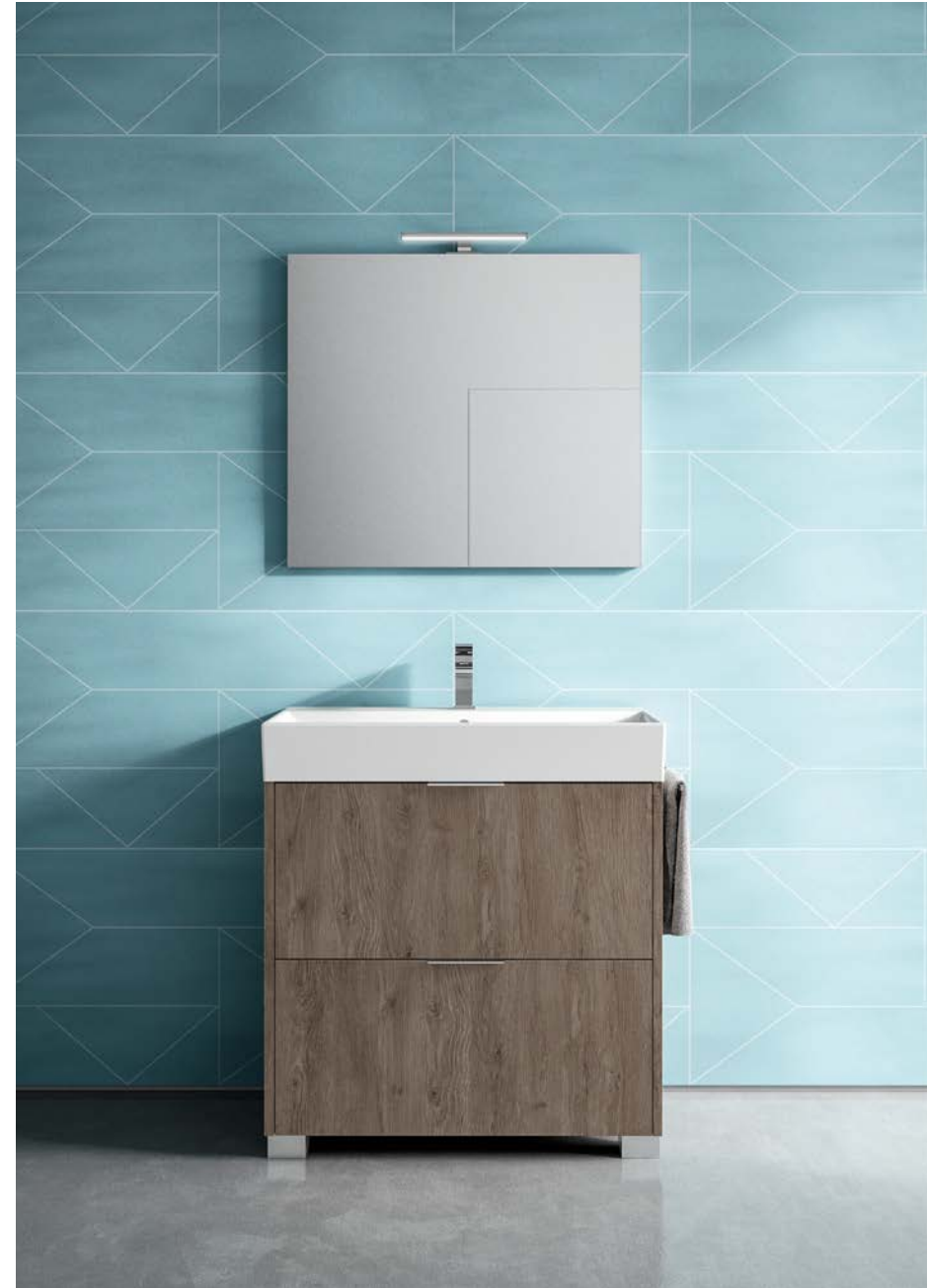
B7 - L 60+60 x P 45 cm / Nobilitato BA992 - W 60 + 60 x D 45 cm / BA992 melamine finish

un programma  
adattabile ad  
ogni spazio

*collection adaptable to  
any requirement*



**B4** - L 60+60 x P 45 cm / Lacklaminat BA001 lucido  
W 60 + 60 x D 45 cm / BA001 glossy Lacklaminat



**B8** - L 80 x P 45 cm / Nobilitato BA992  
W 80 x D 45 cm / BA992 melamine finish





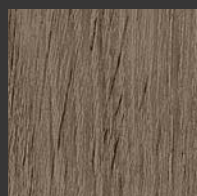
finiture / finishes

## essenze polimeriche

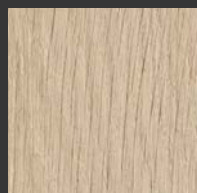
*Wood-effect polymer finishes  
Polymere Oberflächen mit Holzeffekt  
Finitions polymères effet bois  
Acabados poliméricos efecto madera*



BA991



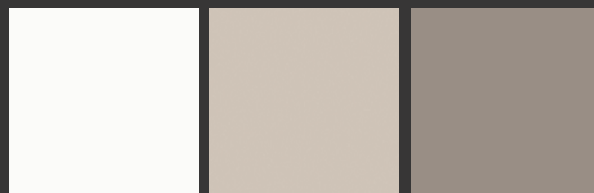
BA992



BA993

## colori lacklaminat lucidi e opachi

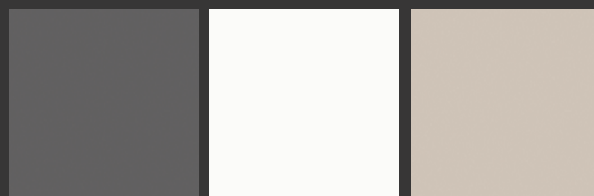
*Glossy and matt coloured Lacklaminat  
Glänzende und matte Lacklaminat-Farben  
Finitions Lacklaminat colorées brillantes et mates  
Colores brillantes y mate Lacklaminat*



BA001 lucido

BA002 lucido

BA003 lucido



BA004 lucido

BA005 opaco

BA006 opaco



BA007 opaco

BA008 opaco

## laccati metal color opachi

*Metal color matt lacquers  
Matte Lackausführungen metal  
Laqués Metal Color mats  
Lacados mate de color metálico*



Oro

Rame

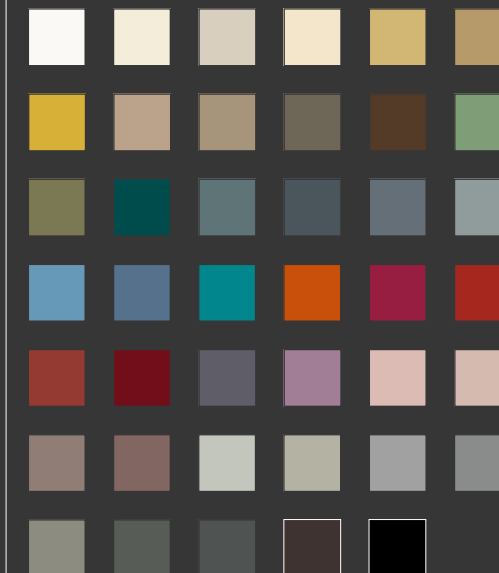


Titanio

Bianco Perlato

## laccati opachi e lucidi

*Matt and glossy lacquers  
Glänzende Lackausführungen  
Laqués mats et brillants  
Lacados mate y brillantes*





# sinonimo di naturalzza e concretezza di design

*synonymous with  
naturalness and sound  
design*

## Moon

The bright side of bathroom



M6 - L 110 x P 45 cm / Finitura LB005 - W 110 x D 45 cm / Finitura LB005

Presente con tre larghezze, Moon è un'elegante soluzione dove praticità e dinamismo sono necessarie. Tutto curvo, design semplice, forme ergonomiche, funzioni che facilitano le "operazioni". L'originale lavabo è in ceramica bianca.

*Moon is available in three widths, providing elegant solutions that never compromise on utility and dynamism. With a simple, curved design and ergonomic shapes, it is synonymous with easy functionality. The original washbasin is in white ceramic.*

*Eine elegante Lösung, die sich durch Zweckdienlichkeit und Dynamik auszeichnet. Runde Linienführung, schlichtes Design, ergonomische Formen und ausgeprägte Benutzerfreundlichkeit. Das originelle Waschbecken ist aus weißem Keramik.*

*Disponible avec trois largeurs, Moon est une solution élégante où praticité et dynamisme sont nécessaires. Avec un design simple et courbe, des formes ergonomiques, des fonctions facilitant les "opérations". La vasque originale est en céramique blanche.*



M4 - L 77,5+ 77,5 x P 40 cm / Finitura LB002 - W 77,5 + 77,5 x D 40 cm / LB002 finish



M5 - L 77.5 x P 40 cm / Laccato medioevo lucido - W 77.5 x D 40 cm / Medioevo glossy lacquer

leggerezza  
estetica e  
materica

*aesthetic and material  
lightness*



M1 - L 110 x P 45 cm / Finitura CB001 opaco - W 110 x D 45 cm / CB001 matt finish

naturalità e  
matericità nelle  
finiture *naturalness and  
materiality*



M2 - L 77.5 x P 40 cm / Finitura LB003 - W 77.5 x D 40 cm / LB003 finish



finiture / finishes

## essenze polimeriche

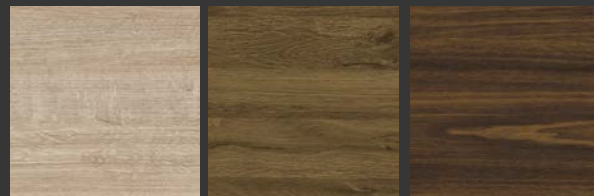
*Wood-effect polymer finishes*  
*Polymere Oberflächen mit Holzeffekt*  
*Finitions polymères effet bois*  
*Acabados poliméricos efecto madera*



LB001

LB002

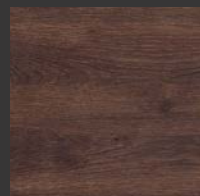
LB003



LB004

LB005

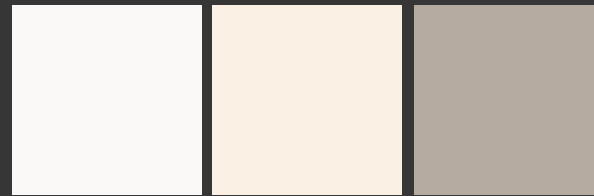
LB006



LB007

## colori polimerici lucidi e opachi

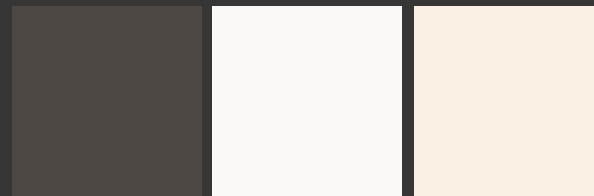
*Coloured polymer finishes (matt and glossy)*  
*Farbige Polymeroberflächen (matt und glänzend)*  
*Finitions polymères colorées brillantes et mates*  
*Colores poliméricos brillantes y mate*



CB001 opaco

CB002 opaco

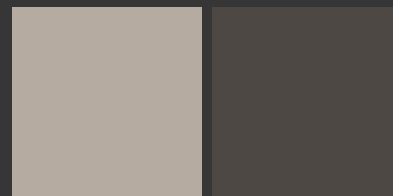
CB003 opaco



CB004 opaco

CB005 lucido

CB006 lucido

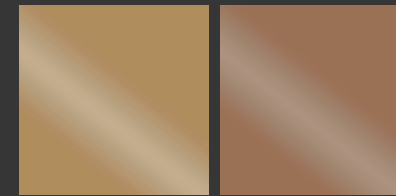


CB007 lucido

CB008 lucido

## laccati metal color opachi

*Metal color matt lacquers*  
*Matte Lackausführungen metal*  
*Laqués Metal Color mats*  
*Lacados mate de color metálico*



Oro

Rame



Titanio

Bianco Perlato

## laccati opachi e lucidi

*Matt and glossy lacquers*  
*Glänzende Lackausführungen*  
*Laqués mats et brillants*  
*Lacados mate y brillantes*





# essenzialità, modularità e flessibilità compositiva

*streamlined design,  
modularity and flexibility*



K1 - L 210 x P 65.5 cm / Nobilitato BA991 - W 210 x D 65.5 cm / BA991 melamine finish

Essenzialità progettuale, modularità e flessibilità compositiva riportano in primo piano il binomio estetica e funzione da declinare alla stanza lavanderia. Una serie di accessori completano la collezione rendendo ancora più esteso il concetto di organizzazione ed operatività.

*Streamlined design, modularity and flexibility bring to the fore the notions of good looks and functionality applied to the laundry room. An exhaustive choice of accessories complete the collection, enhancing the concepts of organization and efficiency.*

*Ein schlichtes Design, Modularität und Flexibilität stellen die Kombination von attraktiver Optik und Funktionalität im Waschküchenraum in den Vordergrund. Eine umfangreiche Auswahl an Zubehör ergänzt die Kollektion und erweitert das Konzept der Organisation und Effizienz.*

*Design épuré, modularité et flexibilité de la composition mettent en premier plan les concepts d'esthétique et fonctionnalité appliqués à la buanderie. Une vaste gamme d'accessoires complète la collection en valorisant les concepts d'organisation et d'efficacité.*



K9 - L 124 x P 65 + L 230 x P 34/50.5 cm / Laccato cappuccino opaco, nobilitato bianco, nobilitato BA991  
W 124 x D 65 + L 230 x D 34/50.5 cm / Cappuccino matt lacquered, Bianco melamine finish, BA991 melamine finish





K2 - L 220 x P 50/36 cm / Nobilitato BA992  
W 220 x D 50/36 cm / BA992 melamine finish

Kandy come  
pensiero d'arredo  
completo e  
funzionale

*Kandy is a comprehensive and functional  
furniture collection for the laundry room*



K8 - L 295 x P 50/65.5 cm / Nobilitato BA991 - W 295 x D 50/65.5 cm / BA991 melamine finish

organizzazione  
ed ottimizzazione  
dello spazio  
*a perfectly organized  
laundry room*



**K10** - L 185 x P 50.5 cm / Nobilitato BA991 - W 185 x D 50.5 cm / BA991 melamine finish



**K5** - L 185 x P 50.5 cm / Nobilitato BA991 - W 185 x D 50.5 cm / BA991 melamine finish



finiture / finishes

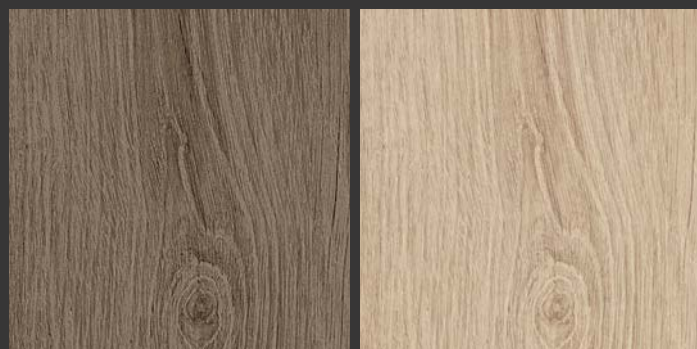
## finiture nobilitate

*Melamine finishes*  
*Melaminbeschichtungen*  
*Finitions mélaminées*  
*Acabados melaminados*



Bianco

BA991



BA992

BA993

## laccati metal color opachi

*Metal color matt lacquers*  
*Matte Lackausführungen metal*  
*Laqués Metal Color mats*  
*Lacados mate de color metálico*



Oro

Rame



Titanio

Bianco Perlato

## laccati opachi e lucidi

*Matt and glossy lacquers*  
*Glänzende Lackausführungen*  
*Laqués mats et brillants*  
*Lacados mate y brillantes*



Blank lined writing area on the left side of the page.

Blank lined writing area on the right side of the page.



**Ideagroup  
Company Profile**

Luglio 2022

AD: Ideagroup  
Graphic concept & Images: Neiko  
Ph: Emozioni / Kleb / Pitari  
Printed in Italy: Grafiche F.G. srl

Ideagroup srl si riserva la facoltà di modificare, in qualunque momento e senza preavviso, le caratteristiche tecniche degli elementi illustrati nel presente catalogo. Declina ogni responsabilità per eventuali inesattezze contenute nello stesso.

*/ Ideagroup srl reserves the right to modify the technical characteristics of the elements contained in this catalogue without notice and shall not be liable for any inexactness contained herein.*

*/ Ideagroup srl behält sich das Recht vor, die technischen Eigenschaften der im vorliegenden Katalog abgebildeten Elemente jederzeit und ohne Vorbescheid zu ändern. Man lehnt jede Haftung für eventuelle im Katalog enthaltene Fehler ab.*

*/ Ideagroup srl se réserve la faculté de modifier, dans tout moment et sans avis préalable, les caractéristiques techniques des éléments montrés dans ce catalogue. L'entreprise décline toute responsabilité pour d'éventuelles inexactitudes dans le présent catalogue.*

Rivenditore - Seller - Händler - Revendeur - Revendedor



Idea srl  
via Marigonda, 3/1  
31040 Gorgo al Monticano (TV)  
Italy  
T +39 0422 742184  
[ideagroup@ideagroup.it](mailto:ideagroup@ideagroup.it)  
[ideagroup.it](http://ideagroup.it)